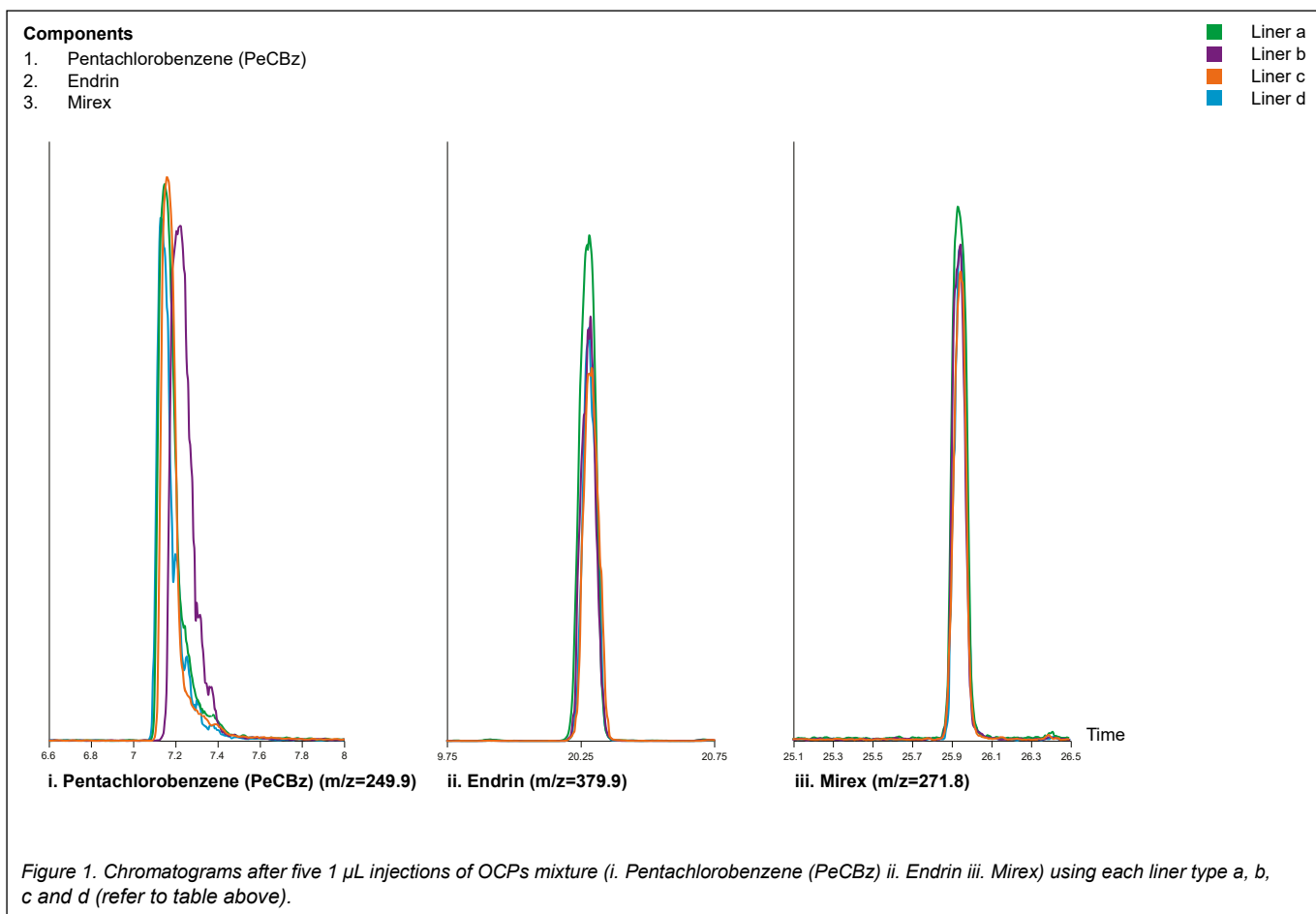


**Analysis of organochlorine pesticides (OCPs) in persistent organic pollutants (POPs)  
SGE OptChem inlet liner**

SGE OptChem™ inlet liner part numbers 0926201901 PK1, 09262019 PK5	
Liner types	a. SGE OptChem taper inlet liner with quartz wool and pre-fitted CRS ONE o-ring, 4 mm ID, length 78.5 mm (part number 0926201901, PK1; part number 09262019, PK5) b. SGE OptChem taper FocusLiner with quartz wool and pre-fitted CRS ONE o-ring, 4 mm ID, length 78.5 mm (part number 0926200301, PK1; part number 09262003, PK5) c. SGE OptChem taper FocusLiner with pre-fitted CRS ONE o-ring, 2.3 mm ID, length 78.5 mm (part number 0926211101, PK1; part number 09262111, PK5) d. Competitor deactivated liner
	GCMS Agilent 7890A Gas Chromatograph
	Sampler Agilent 7693, 5.0 µL syringe
	Injection mode 1 µL pulsed splitless, 250°C, injection pulse 32 psi (1.5 min), purge flow to split vent 50 mL/min (1 min)
Column (5%-phenyl), 95% methylpolysiloxane 30 m x 0.25 mm x 0.25 µm	Carrier gas He, constant 2 mL/min
Guard column 430 µm OD x 320 µm ID x 2 m length deactivated fused silica tubing (part number 0624470)	Oven 120°C (1 min), 5°C/min to 245°C, 20°C/min to 300°C (2 min)
Septa 11 mm OD BTO premium high-temp center guide GC septa (part number 041898, PK25)	Run time 30.75 min
Sample Environmental pollutants OCPs mixture of PeCBz, Endrin, and Mirex each at 909 pg/µL	MS Agilent 7000C with electron impact ionization source operated in multiple reaction monitoring (MRM) mode
	Ionization mode Positive
	Source 150°C
	Quadrupole 1 and 2 No heating
	Transfer line 330 °C



Specifications are subject to change without notice.  
 Agilent is a registered trademark of Agilent Technologies, Inc.